

# KALETA®

[www.kaleta.pl](http://www.kaleta.pl)

## PLASTERING UNITS



Branded manufacturer of equipment for construction

# SPRAY APPLIED PLASTERS

Plastering units used for spray applied plasters (cement-lime, lime-gypsum and special plasters as well as self-levelling compounds).

## Type. KALETA – 5

### Technical characteristics

Lenght	900 mm
Width	720 mm
Height	1500 mm
Charge height	900 mm
Weight	250 kg
Basket capacity	135 kg
*output	6-60 l
Max forcing pressure	30 atm
*supply distance	up to 30 m
Pump motor	5,5 kW/400 rpm
Basket motor	1,1 kW/45 rpm
Compressor HS-24	300 l/min
Water pump	400 V

### Equipment

Spray gun	1 pc
Mortar hose	2x10 m
Air hose	2x10 m
Worm pump D6-3	1 pc
Mixer	1 pc
Cleaner with connector	1 pc
Wrench for worm	1 pc
Gun nozzle	3 pcs
Open ended spanner	1 pc
Gun cleaner	1 pc
Cleaning ball	1 pc
Coupler	2 pcs
OMM	1 pc



\*Output and supply distance depends on the plastering mix and pump type: D or R  
Cooperates with a silo

## Type. KALETA – 5S

### Technical characteristics

Lenght	900 mm
Width	720 mm
Height	1500 mm
Charge height	900 mm
Weight	250 kg
Basket capacity	135 kg
*output	6-60 l
Max forcing pressure	30 atm
*supply distance	up to 30 m
Pump motor	5,5 kW/400 rpm
Basket motor	1,1 kW/45 rpm
Compressor Kaleta	250 l/min
Water pump	400 V

### Equipment

Spray gun	1 pc
Mortar hose	2x10 m
Air hose	2x10 m
Worm pump D6-3	1 pc
Mixer	1 pc
Cleaner with connector	1 pc
Wrench for worm	1 pc
Gun nozzle	3 pcs
Open ended spanner	1 pc
Gun cleaner	1 pc
Cleaning ball	1 pc
Coupler	2 pcs
OMM	1 pc



\*Output and supply distance depends on the plastering mix and pump type: D or R  
Cooperates with a silo

# SPRAY APPLIED PLASTERS

Plastering units used for spray applied plasters (cement-lime, lime-gypsum and special plasters as well as self-levelling compounds).

## Type. KALETA – 4

### Technical characteristics

Lenght	1580 mm
Width	670 mm
Height	1200 mm
Charge height	950 mm
Weight	160 kg
Basket capacity	75 kg
*output	6-60 l
Max forcing pressure	30 atm
*supply distance	up to 20 m
Pump motor	5,5 kW/400 rpm
*Compressor HS-24	300 l/min
⌘Compressor Kaleta	250 l/min
Water pump	400 V

⌘Compressor Kaleta for unit type Kaleta – 4S

\*Output and supply distance depends on the plastering mix and pump type: D or R  
No cooperation with a silo

## Type. KALETA – 4S

### Equipment

Spray gun	1 pc
Mortar hose	1x10 m
Air hose	1x10 m
Worm pump D6-3	1 pc
Mixer	1 pc
Cleaner with connector	1 pc
Wrench for worm	1 pc
Gun nozzle	3 pcs
Open ended spanner	1 pc
Gun cleaner	1 pc
Cleaning ball	1 pc
Coupler	2 pcs
OMM	1 pc



## Type. KALETA – 3

### Technical characteristics

Lenght	1200 mm
Width	750 mm
Height	1550 mm
Charge height	1025 mm
Weight	220 kg
Basket capacity	145 kg
*output	6-60 l/min
Max forcing pressure	30 atm
*supply distance	up to 30 m
Pump motor	5,5 kW/400 rpm
Basket motor	1,1 kW/36 rpm
Compressor HS-24	300 l/min
⌘Compressor Kaleta	250 l/min
Water pump	400 V

⌘Compressor Kaleta for unit type Kaleta – 3S

\*Output and supply distance depends on the plastering mix and pump type: D or R  
Cooperates with a silo

## Type. KALETA – 3S

### Equipment

Spray gun	1 pc
Mortar hose	2x10 m
Air hose	2x10 m
Worm pump D6-3	1 pc
Mixer	1 pc
Cleaner with connector	1 pc
Wrench for worm	1 pc
Gun nozzle	3 pcs
Open ended spanner	1 pc
Gun cleaner	1 pc
Cleaning ball	1 pc
Coupler	2 pcs
OMM	1 pc



# SPRAY APPLIED PLASTERS

Plastering units used for spray applied plasters (cement-lime, lime-gypsum and special plasters as well as self-levelling compounds).

## Type. KALETA – 2

### Technical characteristics

Length	1200 mm
Width	720 mm
Height	1570 mm
Charge height	980 mm
Weight	220 kg
Basket capacity	100 kg
*output	6-60 l
Max forcing pressure	30 atm
*supply distance	up to 30 m
Pump motor	5,5 kW/400 rpm
Basket motor	1,1 kW/36 rpm
Compressor HS-24	300 l/min
Water pump	400 V

### Equipment

Spray gun	1 pc
Mortar hose	2x10 m
Air hose	2x10 m
Worm pump D6-3	1 pc
Mixer	1 pc
Cleaner with connector	1 pc
Wrench for worm	1 pc
Gun nozzle	3 pcs
Open ended spanner	1 pc
Gun cleaner	1 pc.
Cleaning ball	1 pc
Coupler	2 pcs
OMM	1 pc



\*Output and supply distance depends on the plastering mix and pump type: D or R  
Cooperates with a silo

## Type. KALETA – 1

### Technical characteristics

Length	960 mm
Width	700 mm
Height	1300 mm
Charge height	1050 mm
Weight	160 kg
Basket capacity	45 kg
*output	6-60 l
Max forcing pressure	30 atm
*supply distance	up to 20 m
Pump motor	5,5 kW/400 rpm
Compressor HS-24	300 l/min
Water pump	400 V

### Equipment

Spray gun	1 pc
Mortar hose	1x10 m
Air hose	1x10 m
Worm pump D6-3	1 pc
Mixer	1 pc
Cleaner with connector	1 pc
Wrench for worm	1 pc
Gun nozzle	3 pcs
Open ended spanner	1 pc
Gun cleaner	1 pc
Cleaning ball	1 pc
Coupler	2 pcs
OMM	1 pc



\*Output and supply distance depends on the plastering mix and pump type: D or R  
No cooperation with a silo

# UNIT WITH POWER-SUPPLY 230 V FOR SPRAY APPLIED PLASTER

Plastering unit with single-phase power supply used for spray applied plasters (cement-lime, lime-gypsum, special plaster and self-levelling compounds).

## Type. KALETA – 4/230

### Technical characteristics

Lenght	1580 mm
Width	670 mm
Height	1200 mm
Charge height	950 mm
Weight	160 kg
Basket capacity	75 kg
Max output	25 l/min
Max forcing pressure	30 atm
*supply distance	up to 20 m
Pump motor	4 kW/230 V
Compressor HS-24 P	300 l/min
⌘Compressor Kaleta	250 l/min
Water pump	230 V
Voltage	230 V 50 Hz

⌘Compressor Kaleta for unit type Kaleta – 4S/230

\*Output and supply distance depends on the plastering mix and pump type D  
No cooperation with a silo

## Type. KALETA – 4S/230

### Equipment

Spray gun	1 pc
Mortar hose	1x10 m
Air hose	1x10 m
Worm pump D6-3 FIT	1 pc
Mixer	1 pc
Cleaner with connector	1 pc
Wrench for worm	1 pc
Gun nozzle	3 pcs
Open ended spanner	1 pc
Gun cleaner	1 pc
Cleaning ball	1 pc
Coupler	2 pcs
OMM	1 pc



## SILO KALETA – 140

Silo (pneumatic conveyor system) is an automated device to apply dry plastering material from silo to plastering unit.

## Type. SILO KALETA – 140

### Technical characteristics

Lenght	1200 mm
Width	560 mm
Height	650 mm
Total weight	345 kg
Compressor power	140 m <sup>3</sup> /h
Pressure	2,5 bar
Motor power	7,5 kW
Voltage	400 V/50 Hz

### Equipment

Claw (type) compressor	1 pc
Conveyor receiver (silomat bell)	70 l
Air hose	3 m
Probe (sensor)	42 V

### Additional equipment (optional)

Duct probe 3x1,0 complete  
Power cable 5x2,5 complete  
Hose for dry material  
Cover of silomat for plastering unit  
Vibrator

2x25m  
2x25m  
2x25m



# MODULAR PLASTERING UNIT WITH POWER-SUPPLY 230 V AND 400 V FOR SPRAY APPLIED PLASTER

Modular plastering unit (possibility of dividing a unit for 4 main modules: column with motoreducer pump, feed basket, frame with electrical, air and water systems). Single-phase 230V and three-phase 400V power supply option. Used for spray applied plasters (cement-lime, lime-gypsum, gypsum, special plasters and self-leveling compounds).

## Type. KALETA – 6/230

### Technical characteristics

Length	960 mm
Width	670 mm
Height	1580 mm
Charge height	960 mm
Weight	250 kg
Basket capacity	100 kg
*output	25 l/min
Max. forcing pressure	30 atm
*supply distance	up to 20 m
Pump motor	4 kW/230 V
Basket motor	1,1 kW/230 V
Compressor HS-24 P	300 l/min
Compressor Kaleta	250 l/min
Water pump	230 V
Voltage	230 V 50 Hz

Compressor Kaleta for unit type Kaleta-6S/230

\*Output and supply distance depends on the plastering mix and pump used D  
Cooperates with a silo

## Type. KALETA – 6S/230

### Equipment

Spray gun	1 pc
Mortar hose	1×10 m
Air hose	1×10 m
Worm pump D6-3 FIT	1 pc
Mixer	1 pc
Cleaner with connector	1 pc
Wrench for worm	1 pc
Gun nozzle	3 pcs
Open ended spanner	1 pc
Gun cleaner	1 pc
Cleaning ball	1 pc
Coupler	2 pcs
OMM	1 pc



## Type. KALETA – 6

### Technical characteristics

Length	960 mm
Width	670 mm
Height	1580 mm
Charge height	960 mm
Weight	250 kg
Basket capacity	100 kg
*output	6-60 l
Max. forcing pressure	30 atm
*supply distance	up to 30 m
Pump motor	5,5 kW/400 rpm
Basket motor	1,1 kW/45 rpm
Compressor HS-24	300 l/min
Compressor Kaleta	250 l/min
Water pump	400 V
Voltage	400 V 50 Hz

Compressor Kaleta for unit type Kaleta-6S

\*Output and supply distance depends on the plastering mix and pump used D or R  
Cooperates with a silo

## Type. KALETA – 6S

### Equipment

Spray gun	1 pc
Mortar hose	2×10 m
Air hose	2×10 m
Worm pump D6-3	1 pc
Mixer	1 pc
Cleaner with connector	1 pc
Wrench for worm	1 pc
Gun nozzle	3 pcs
Open ended spanner	1 pc
Gun cleaner	1 pc
Cleaning ball	1 pc
Coupler	2 pcs
OMM	1 pc



# FILLING AGGREGATES

Kaleta-151 aggregate with an air system, used for application of mineral and acryl putties, structural plasters, adhesives, finishing surfaces, insulation systems, fire protections.

## Type. KALETA – 151

### Technical characteristics

Voltage	230V/50 Hz
Fuses	25 A
Connection cable	3x1,5 mm <sup>2</sup>
Motor power (variable rev.)	2,2 kW
*max output	20 l/min
Max pressure	30 bar
Max grain size	4 mm
*max distance	up to 20 m
Dimensions	1190x540x670
Tank capacity	60 litres
Weight	110 kg
Compressor	1,5 kW 390 l/min

### Equipment

Tank 60 L of stainless steel	1 pc
Trolley set	1 pc
Compressor	1 pc
Control Panel	1 pc
Mortar hose 25	1x10 m
Air hose 12,5	1x10 m
Spray gun	1 pc
Spray nozzle 4,6,8,10, flat	1 set
Worm jacket D4-3	1 set
Cleaning ball	1 pc
Coupler	2 pcs
Wrench for worm	1 pc
Open ended spanner	1 pc
OMM	1 pc



\*Output and supply distance depends on the plastering mix and smooth speed control as well as on pump type D

Small, compact and universal aggregate KALETA-152 without air system, with single-phase 230V power supply. It is designed for work with puttying compounds, leveling compounds, gypsum finish coats, etc. Used for all kinds of ready-to-use materials: putty coat, smoothing coat, complementary coat, protective coat, bitumen coat.

## Type. KALETA – 152

### Technical characteristics

Voltage	230V/50 Hz
Engine power (variable rpm)	2,2 kW
*Engine power (constant rpm)	2,2 kW
Connecting cable	min. 3x1,5 mm <sup>2</sup>
Max output	6 l/min
Max forcing pressure	100 bar
Dimensions	900x520x860 mm
Basket capacity	57 l
Weight	85 kg

## Typ KALETA – 152 eco

### Equipment

Trolley set	1 pcs
Control panel	1 pcs
Mortar hose 20	1x9 m
Spraying gun	1 pcs
Worm pump	1 set
Cleaning ball	1 pcs
Open ended spanner	1 pcs
Control duct	1x10 m
OMM	1 pcs



\*parameters for the Kaleta-152 eco aggregate



# PLASTERING UNIT FOR SPECIAL TASKS WITH POWER SUPPLY 230/400 V FOR SPRAY APPLIED PLASTERS

Plastering units with possibility of single-phase power supply 230 V and three phase 400 V. Thanks to the possibility of switching power supply, they can be used in situations where we cannot connect to a three-phase power supply or where single-phase power supply is not certain.

Thanks to this solution, the machines can be used in many ways for their intended purpose.

Used for spray applied plasters (cement-lime, lime-gypsum, gypsum, special plaster and self-levelling compounds).

## Type. KALETA – 6 230/400V MULTIVOLTAGE

### Technical characteristics

Length	960 mm
Width	670 mm
Height	1580 mm
Charge height	960 mm
Weight	250 kg
Basket capacity	100 kg
Max output	25 l/min
Max forcing pressure	30 atm
*supply distance	up to 20 m
Pump motor	4 kW/230 V
Basket motor	1,1 kW/230V
Compressor HS-24 P	300 l/min
Compressor Kaleta	250 l/min
Water pump	230 V
Voltage	230 V / 400 V 50 Hz

### Equipment

PSpray gun	1 pc
Mortar hose	1x10 m
Air hose	1x10 m
*Worm pump D6-3 FIT	1 pc
Mixing device	1 pc
Cleaner with connector	1 pc
Wrench for worm	1 pc
Gun nozzle	3 pcs
Open ended spanner	1 pc
Gun cleaner	1 pc
Cleaning ball	1 pc
Coupler g/k	2 pcs
Power connection adapter	1 pc
OMM	1 pc



Compressor Kaleta for Plastering Unit Type KALETA – 6S 230/400V \*Possibility to use worm pump D7-2,5 FIT with increased efficiency \*output and supply distance depend on plastering mixture and type of the pump: D or R Cooperates with silo

## Type. KALETA – 4 230/400V MULTIVOLTAGE

### Technical characteristics

Length	1580 mm
Width	670 mm
Height	1200 mm
Charge height	950 mm
Weight	160 kg
Basket capacity	75 kg
Max output	25 l/min
Max forcing pressure	30 atm
*supply distance	up to 20 m
Pump motor	4 kW/230 V
Compressor HS-24 P	300 l/min
Compressor Kaleta	250 l/min
Water pump	230 V
Voltage	230 V / 400 V 50 Hz

### Equipment

Spray gun	1 pc
Mortar hose	1x10 m
Air hose	1x10 m
*Worm pump D6-3 FIT	1 pc
Mixing device	1 pc
Cleaner with connector	1 pc
Wrench for worm	1 pc
Gun nozzle	3 pcs
Open-ended spanner	1 pc
Gun cleaner	1 pc
Cleaning ball	1 pc
Coupler g/k	2 pcs
Power connection adapter	1 pc
OMM	1 pc



Compressor Kaleta for Plastering Unit Type KALETA – 4S 230/400V \*Possibility to use worm pump D7-2,5 FIT with increased efficiency \*output and supply distance depend on plastering mixture and type of the pump: D or R No cooperation with a silo



# MACHINES FOR SPECIAL TASKS

## SPRAY APPLIED PLASTERS

Plastering units used for spray applied plasters (cement-lime, lime-gypsum and special plasters as well as self-levelling compounds).

### Type. KALETA – 5S MAX

#### Technical characteristics

Length	900 mm
Width	720 mm
Height	1700 mm
Charge height	900 mm
Weight	280 kg
Basket capacity	135 kg
<b>*output</b>	<b>6-80 l</b>
Max forcing pressure	30 atm
<b>*supply distance</b>	<b>up to 40 m</b>
<b>Pump motor</b>	<b>7,5 kW/400 rpm</b>
Basket motor	1,1 kW/45 rpm
Compressor Kaleta	250 l/min
Water pump	400 V

#### Equipment

Spray gun	1 pc
Mortar hose	2x10 m
Air hose	2x10 m
Worm pump D6-3	1 pc
Mixer	1 pc
Cleaner with connector	1 pc
Wrench for worm	1 pc
Gun nozzle	3 pcs
Open ended spanner	1 pc
Gun cleaner	1 pc
Cleaning ball	1 pc
Coupler	2 pcs
OMM	1 pc



\*Output and supply distance depends on the plastering mix pump used D or R  
Cooperates with a silo

## TRADITIONAL PLASTERS

Plastering unit used for mixes prepared on the grounds of a bases of graining up to 6 mm (cement-lime, lime-gypsum and special plasters as well as self-levelling compounds and cement-lime compounds).

### Type. KALETA – 150

#### Technical characteristics

Length	2100 mm
Width	750 mm
Height	930 mm
Charge height	530 mm
Volume	100 l
Weight	200 kg
<b>Weight</b>	<b>230 kg**</b>
*output	20-80 l/min
<b>*output</b>	<b>20-100 l/min**</b>
Max delivery height	10 m
*supply distance	do 30 m
<b>*supply distance</b>	<b>do 40 m**</b>
Compressor HS-24	350 l/min
Voltage	400 V/50 Hz
Pump motor	5,5 kW
<b>Pump motor</b>	<b>7,5 kW**</b>
Graining	6 mm

### Type. KALETA – 150 MAX

#### Equipment

Spray gun	1pc
Mortar hose 35	30 m
Air hose 12,5	30 m
Pompa ślimakowa 2L6	1 pc
Cleaning ball	1 pc
Gun cleaner	1 pc
Gun nozzle	2 pcs
Wrench for worm	1 pc
Open ended spanner	1 pc
OMM	1 pc



\*Output and supply distance depends on the plastering mix and smooth speed control as well as on pump type R or 2L6y R lub 2L6  
\*\*parameters for the Kaleta-150 MAX aggregate

# CHARACTERISTICS OF WORM PUMPS (ROTOR, STATOR)

Pump type	Colour	Capacity at 200 rpm	Capacity at 400 rpm	Grain size mm
D4-3	Green	6	12	to 4
D6-3	Blue	10	20	about 3
D6-3 Super	Silver	10	20	about 3
D6-3 TWINGO	Orange	10	20	about 3
D7-2,5	Purple	15	30	about 3
D8-1,5	Yellow	20	40	to 4
2L6	Yellow	30	60	to 6
D8-2	Black	16	32	about 3

Worm pumps intended for aggregates with 230V / 400V power supply.

D7-2,5 FIT	Purple	15	30	about 2
D6-3 FIT	Red	10	20	about 2
B4-2L	Black	5	10	to 3

Worm pumps intended for filling aggregates with 230V power supply.

Kaleta-152	Blue	variable rev. 6l/min ±	100 BAR ±	to 1
------------	------	------------------------	-----------	------

\* Parameters depend on the quality, composition and consistency of the mortar and on the length or height of the pressing.



*For efficient operation of plastering units  
and components, buy only original Kaleta parts*

# KALETA®

www.kaleta.pl



## Construction Devices Production Plant - KALETA

ZPUB KALETA SPÓŁKA KOMANDYTOWA  
Ul. Radziwiłłów 138  
32-084 Aleksandrowice k/Krakowa  
Polska  
NIP: PL 513 027 99 02

phone: +48 12 415 21 34  
e-mail: [biuro@kaleta.pl](mailto:biuro@kaleta.pl)  
skype: kaleta-poland

Orders: [kaletaexport@kaleta.pl](mailto:kaletaexport@kaleta.pl)  
[zamowienia@kaleta.pl](mailto:zamowienia@kaleta.pl)

IBAN PL 88 1020 1068 0000 1002 0393 7562  
SWIFT BPKO PL PW  
PKO BP IV O/Kraków  
ul. Dobrego Pasterza 52  
31-416 Kraków

Service: +48 602 639 600

Customer Service Office: e-mail: [bok@kaleta.pl](mailto:bok@kaleta.pl)  
phone: +48 12 415 21 34  
+48 12 665 40 19  
+48 532565434

Internet shop: [www.kaletashop.pl](http://www.kaletashop.pl)



Online catalog:



Location:



## Sales Shops:



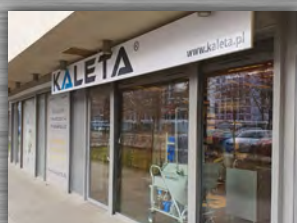
### KALETA Service branch in Cracow

Al. 29 Listopada 193  
31-241 Kraków  
phone: +48 12 418 15 25  
e-mail: [kaletaserwis.kr@kaleta.pl](mailto:kaletaserwis.kr@kaleta.pl)  
skype: kaleta\_serwis\_krakow



### KALETA Service branch in Lublin

ul. Pogodna 50A  
20-337 Lublin  
phone: +48 81 444 24 00  
e-mail: [kaletaserwis@kaleta.pl](mailto:kaletaserwis@kaleta.pl)  
skype: kaleta\_serwis\_lublin



### KALETA Service branch in Warsaw

ul. Jana Kazimierza 30/lok. 3  
01-248 Warszawa  
phone: +48 22 408 78 70  
e-mail: [kaletaserwis.war@kaleta.pl](mailto:kaletaserwis.war@kaleta.pl)  
skype: kaleta\_serwis\_warszawa



### KALETA Service branch in Wroclaw

ul. Przyjaźni 34D  
53-030 Wroclaw  
phone: +48 71 339 47 36  
e-mail: [kaletaserwis.wro@kaleta.pl](mailto:kaletaserwis.wro@kaleta.pl)  
skype: kaleta\_serwis\_wroclaw